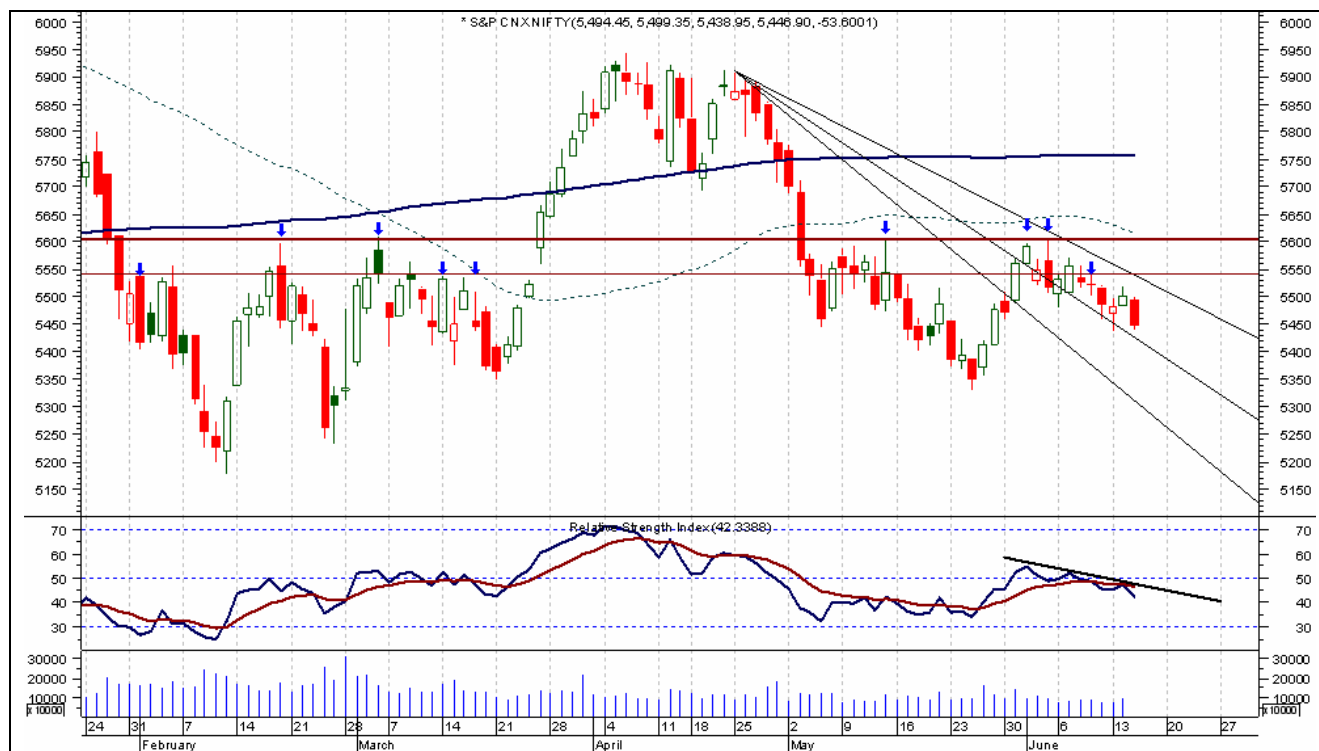


STOCK2WATCH



Opening was flat with negative momentum, market drifted down as day process, nifty making intraday low of 5438.95, it look market wants more time to consolidate in region of 5400 – 5600 range. Today's closing was in red. Drawing Fibonacci Fan from 5906 high made on 25-04-2011, it look we would not be able to cross the upper trend line which is acting as resistance, breaking and trading below middle trend line invites more selling pressure, which can take nifty to 5300 – 5250 level. There are two horizontal line show on chart which are showing resistance value as 5550 and 5600 level.

The indicator RSI have touch its signal line, can came back from their. As trader, strategy would be buying on dips with stop loss of 5400 level. Among the indices, 458 stocks ended in green territory and 937 in red.

While 50SMA (Dotted Line) is trading at 5616.36 and 200SMA is trading a 5757.85.

The Sensex closed down by 176.42 points at 18132.24 while Nifty ended down by 53 points at 5447.50.

NIFTY SPOT (5447.50) -- RES (5487/5510/5540) SUPP (5410/5380/5351)

SECTORAL INDICES

| GAINIERS | % | LOSSERS | % |
|-----------------|----------|----------------|----------|
| FMCG | 0.14 | BANKEX | 1.58 |
| HC | 0.02 | REALTY | 1.34 |
| | | IT | 1.25 |
| | | POWER | 1.10 |

NSE TOP GAINERS / LOSSERS

| GAINERS | LTP | % | LOSSERS | LTP | % |
|----------------|------------|----------|----------------|------------|----------|
| REL INFRA | 564.10 | 1.48 | SAIL | 139.90 | 3.48 |
| TATA MOTOR | 993.60 | 0.98 | DLF | 224.10 | 3.43 |
| HERO HONDA | 1747 | 0.62 | IDFC | 125.15 | 3.43 |
| HUL | 317 | 0.52 | AXIS BANK | 1224.55 | 2.82 |

INTRA DAY CASH LEVEL

| COMPANY | RECOMMENDATION | CMP | SL | TGT |
|----------------|-----------------------|------------|-----------|------------|
| WIPRO | SELL ABOVE 428 | 424.40 | 434 | 419/414 |
| IDFC | SELL ABOVE 126 | 125.15 | 129 | 122/119 |
| IVRCL INFRA | SELL ABOVE 75.20 | 74.20 | 76.50 | 73/71.50 |
| | | | | |

INTRADAY LEVEL FOR TRADING

| SCRIPTS | CLOSE | TRIGGER | PRICE | STOPLOSS | TGT1 | TGT2 |
|-----------|---------|----------|-------|----------|------|------|
| NF | 5452.65 | Buy Abo | 5470 | 5450 | 5495 | 5510 |
| | | Sell Bel | 5435 | 5450 | 5400 | 5380 |
| MARUTI | 1210 | Buy Abo | 1225 | 1210 | 1240 | 1255 |
| | | Sell Bel | 1205 | 1225 | 1185 | 1170 |
| ACC | 990.10 | Buy Abo | 1005 | 990 | 1035 | 1050 |
| | | Sell Bel | 985 | 997 | 972 | 960 |
| RELINFRA | 563.90 | Buy Abo | 568 | 563 | 575 | 585 |
| | | Sell Bel | 556 | 562 | 548 | 540 |
| RIL IND | 900.55 | Buy Abo | 912 | 900 | 922 | 932 |
| | | Sell Bel | 897 | 907 | 885 | 875 |
| REL CAP | 549.9 | Buy Abo | 554 | 547 | 562 | 570 |
| | | Sell Bel | 544 | 549 | 533 | 525 |
| AXIS BAN | 1224.40 | Buy Abo | 1240 | 1225 | 1260 | 1280 |
| | | Sell Bel | 1220 | 1235 | 1205 | 1195 |
| WIPRO | 424.40 | Buy Abo | 430 | 424 | 438 | 444 |
| | | Sell Bel | 422 | 428 | 416 | 410 |
| TAT STEEL | 561.40 | Buy Abo | 566 | 561 | 573 | 578 |
| | | Sell Bel | 558 | 563 | 550 | 542 |
| RANBAXY | 539.75 | Buy Abo | 545 | 539 | 553 | 558 |
| | | Sell Bel | 537 | 542 | 531 | 527 |

HISTORY OF SHORT TERM BUY/SELL

(WITH NSE LEVEL)

| DATE | COMPANY | RECOMMEND | CMP | ORG SL / REV SL | TGT | RETURN |
|------------|---------------------|------------------------|--------|--------------------------|---------|---|
| 15-06-2011 | SKUMAR NAT | LIVE CALL (5 – 7 DAYS) | 67.30 | 64 | 75-80 | OPEN |
| 15-06-2011 | ULFEX | LIVE CALL (5 – 7 DAYS) | 209.60 | 200 | 227-237 | OPEN |
| 14-06-2011 | HDIL FUT | LIVE CALL (2 – 3 DAYS) | 178.60 | 174 | 186-192 | CLOSE, SL HIT (2.57% LOSS) |
| 14-06-2011 | RELIANCE IND FUT | LIVE CALL (2 – 3 DAYS) | 921 | 936 | 900-890 | CLOSE, BOOK PARTIAL PROFIT @ 911 (1.08% PROFIT) |
| 14-06-2011 | ONGC FUT | LIVE CALL (2 – 3 DAYS) | 273.75 | 266 | 282-287 | OPEN |
| 13-06-2011 | PANTALLO RET | LIVE CALL (2 – 3 DAYS) | 289.50 | 280 / 294.50 | 300-310 | CLOSE, 2 ND TARGET ACHIEVED (7.08% PROFIT) |
| 13-06-2011 | CIPLA FUT | LIVE CALL (2 – 3 DAYS) | 338.80 | 332 | 346-353 | OPEN |
| 10-06-2011 | CENTURY TEXT | LIVE CALL (2 – 3 DAYS) | 337.50 | 327 / 338 | 350-360 | CLOSE, 1 ST TARGET ACHIEVED (3.70% PROFIT) |
| 10-06-2011 | BOMBAY DEY | LIVE CALL (2 – 3 DAYS) | 374 | 362 / 375 | 388-400 | CLOSE, BOOK PARTIAL PROFIT @ 380 (1.60% PROFIT) |
| 09-06-2011 | IFCI | LIVE CALL (4 – 5 DAYS) | 49 | 47 | 53-55 | OPEN, BOOK PARTIAL PROFIT @ 49.75 (1.50% PROFIT) |
| 09-06-2011 | BRFL | LIVE CALL (3 – 4 DAYS) | 289 | 280 | 300-307 | OPEN, BOOK PARTIAL PROFIT @ 291.50 (0.86% PROFIT) |

| | | | | | | |
|------------|-----------|------------------------|-------|----|-------------|--|
| 06-06-2011 | ALOK TEXT | LIVE CALL (4 – 5 DAYS) | 26.95 | 26 | 29.25-30.40 | OPEN, BOOK PARTIAL PROFIT @ 27.75 (2.96% PROFIT) |
|------------|-----------|------------------------|-------|----|-------------|--|

INDIA ADVANTAGE SECURITIES Ltd. (www.indiaadvantage.co.in)

Corporate Office: Om Plaza, VasANJI Lalji Road, Opp. Railway Station, Kandivali (W), Mumbai – 400 067.

Disclaimer: This document is not for public distribution and has been furnished to you solely for your information and must not be reproduced or redistributed to any other person. Persons into whose possession this document may come are required to observe these restrictions.

This material is for the personal information of the authorized recipient, and we are not soliciting any action based upon it. This report is not to be construed as an offer to sell or the solicitation of an offer to buy any security in any jurisdiction where such an offer or solicitation would be illegal. It is for the general information of clients of India Advantage Securities Limited. It does not constitute a personal recommendation or take into account the particular investment objectives, financial situations, needs of individual clients.

We have reviewed the report, and in so far as it includes current or historical information, it is believed to be reliable though its accuracy or completeness cannot be guaranteed. Neither India Advantage Securities Limited, nor any person connected with it, accepts any liability arising from the use of this document. The recipients of this material should rely on their own investigations and take their own professional advice. Price and value of the investments referred to in this material may go up or down. Past performance is not a guide for future performance. Certain transactions -including those involving futures, options and other derivatives as well as non-investment grade securities - involve substantial risk and are not suitable for all investors.

Reports based on technical analysis centers on studying charts of a stock's price movement and trading volume, as opposed to focusing on a company's fundamentals and as such, may not match with a report on a company's fundamentals.

Opinions expressed are our current opinions as of the date appearing on this material only. While we endeavor to update on a reasonable basis the information discussed in this material, there may be regulatory, compliance, or other reasons that prevent us from doing so. Prospective investors and others are cautioned that any forward-looking statements are not predictions and may be subject to change without notice. Our proprietary trading and investment businesses may make investment decisions that are inconsistent with the recommendations expressed herein.

The analyst for this report certifies that all of the views expressed in this report accurately reflect his or her personal views about the subject company or companies and its or their securities, and no part of his or her compensation was, is or will be, directly or indirectly related to specific recommendations or views expressed in this report.

No part of this material may be duplicated in any form and/or redistributed without India Advantage Securities Limited prior written consent.